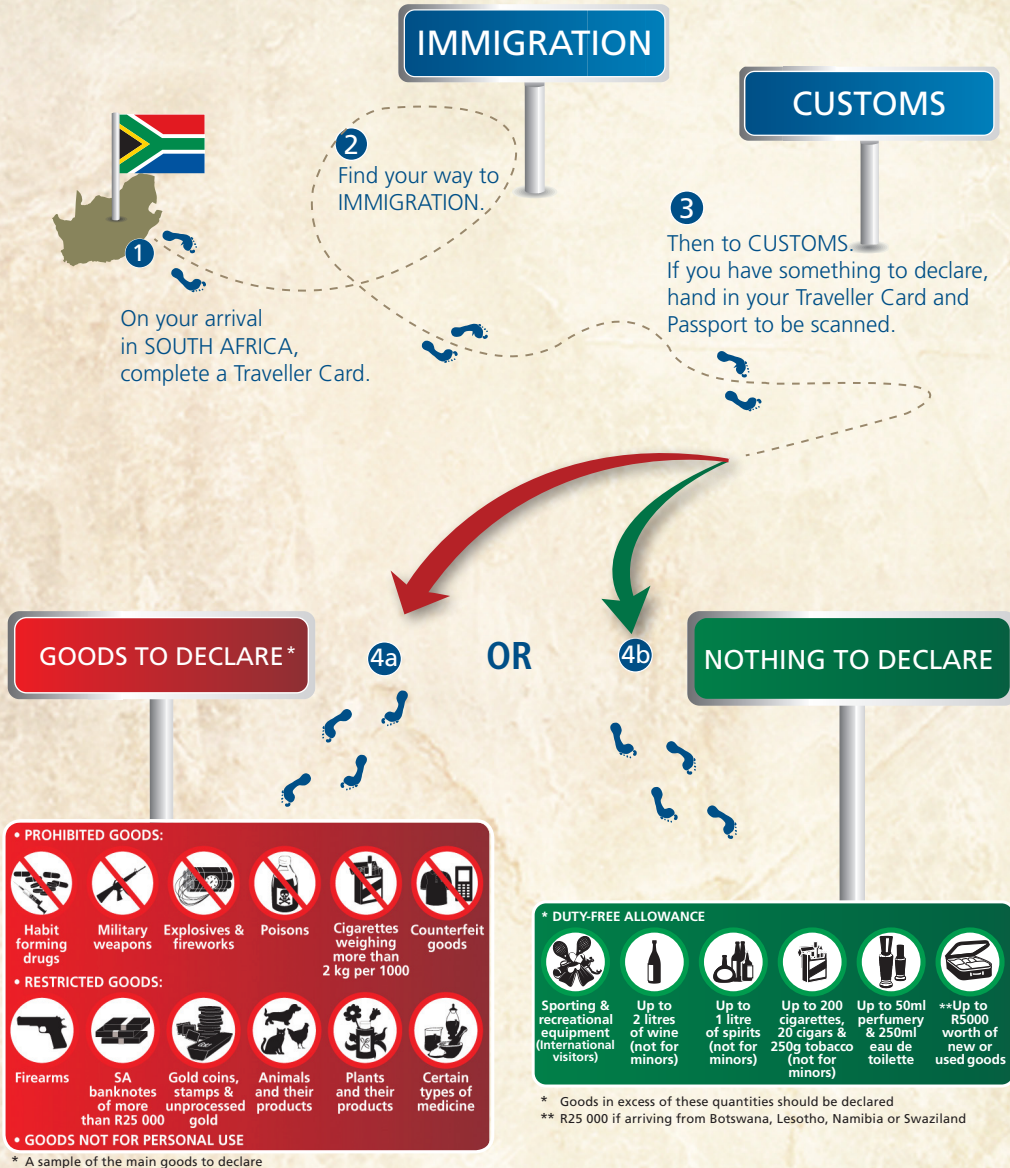


Follow these easy steps and enjoy the magic of South Africa!



* A sample of the main goods to declare

* Goods in excess of these quantities should be declared
 ** R25 000 if arriving from Botswana, Lesotho, Namibia or Swaziland

KK102012



Customs information for TRAVELLERS

What you need to know



- Travellers arriving in South Africa will need to complete a Traveller Card if they have something to declare (this will replace the current DA331 form. Drivers of vehicles from non-South African Customs Union (SACU) countries should also complete the Traveller Card.



- Only original Traveller Cards will be accepted and these will be made available at the arrival and departure points at border posts.
- You need to be aware of the Prohibited and Restricted Goods for SA and your duty-free allowances (see back page) before completing the Traveller Card. You need to complete all relevant fields – whether you are within your duty-free allowance or not – as allowances will be calculated in a thirty (30) day period after an absence of 48 hours from South Africa.



- After going to Immigration where your passport will be scanned, you must hand over your passport and Traveller Card to a Customs official if you have something to declare.



- You will then make a verbal declaration to a Customs official who will capture the information. The system will calculate all applicable duties, Value-added Tax (VAT) and other charges.



- A form containing your verbal declaration information will be printed out for you to check.



- If you are satisfied that everything has been captured correctly as you have declared it, you will be asked to confirm the information by signing on a digital signature pad that will save your signature electronically on the system.



- If required, you will then be asked to make payment. You can do so by using either cash, debit / credit card, or bank guaranteed cheque.



- If you are unable to pay the full amount, Customs has the right to detain some of your goods until full payment has been made.



- If your goods are detained and handed over to another Government Agency (e.g. Department of Health), you will be given a copy of a Customs Detention Notice. You must then take this notice directly to the Other Government Agency (OGA) to obtain approval to bring your goods into South Africa once their inspection has been finalised.

Note: Even if you have nothing to declare, you can still be inspected at any point by a Customs official to verify what you have declared on the Traveller Card.



Informal traders

Informal traders can no longer use the 70707070 code as it has been done away with by Customs. From now on, informal traders will be treated the same as other travellers and their declarations will be captured on the new Passenger Processing System (PPS).

Travellers and informal traders may continue to use this new simplified declaration process provided they comply with Customs rules. These rules are based on various factors, including frequency of travel and value of goods. A traveller will be warned twice that he/she is contravening those rules and by the third time, he/she will be forced to register as a commercial trader.

Travellers from SACU or the Southern African Development Community (SADC) member states are also allowed to bring into South Africa handmade articles of leather, wood, plastic, or glass if the goods do not exceed 25kg in total without the payment of duties and taxes, in a period of 30 days.



SARS is currently also looking at introducing simplified processes for frequent travellers. For more information on Customs registration, go to www.sars.gov.za > Customs & Excise > Customs Procedures > Registration.

Arriving or leaving with valuable goods?

If you are bringing valuable goods into the country on a temporary basis (temporary imports), you should also declare those goods on a Traveller Card. A Temporary Importation Permit (called a TIP) will be issued and you may have to pay a provisional deposit, which you will get back if you leave the country with your goods within 6 months.

If you are leaving the country temporarily with valuable goods, you may also apply for a Temporary Export Permit on a Traveller Card.

If you have any questions, feel free to ask a friendly Customs official at the Port of Entry. We hope that you enjoy your stay in South Africa and that you come back again soon!



More information

Information on Customs requirements for travellers e.g. duty-free allowances is available at www.sars.gov.za > Customs & Excise > Travellers or you can scan the barcode tag with your smart phone using any free QR code reader software available on the Internet.

